

# BEST

VOLUNTARY SCHEME  
FOR BIODIVERSITY AND  
ECOSYSTEM SERVICES  
IN TERRITORIES OF  
EUROPEAN OVERSEAS



## BEST 2.0 Organogram



[www.iucn.org/](http://www.iucn.org/)

### BEST 2.0 Secretariat Team



**Consortium Manager**

Carole Martinez

[carole.martinez@iucn.org](mailto:carole.martinez@iucn.org)



**Project Officer**

Daniel Mitchell

[daniel.mitchell@iucn.org](mailto:daniel.mitchell@iucn.org)



**Senior Finance  
Officer**

Anna Rosenberg

[anna.rosenberg@iucn.org](mailto:anna.rosenberg@iucn.org)



**BEST 2.0 Portal Assistant**

Nicolas Grunner

# BEST 2.0 Regional Hub Teams



## Caribbean Hub CAR-SPAW

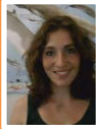
[www.car-spaw-rac.org](http://www.car-spaw-rac.org)



### Hub Coordinator

Romain Renoux

[romain.renoux@rnsn.org](mailto:romain.renoux@rnsn.org)



### Hub Officer

Julie Belmont

[julie.belmont.carspaw@guadeloupe-parcnational.fr](mailto:julie.belmont.carspaw@guadeloupe-parcnational.fr)



## Indian Ocean Hub

IUCN-FR

[www.uicn.fr](http://www.uicn.fr)



### Hub Coordinator/Hub Officer

Tanguy Nicolas

[tanguy.nicolas@uicn.fr](mailto:tanguy.nicolas@uicn.fr)



## Pacific Hub

IUCN-FR

[www.uicn.fr](http://www.uicn.fr)



### Hub Coordinator

Anne Caillaud

[Anne.caillaud@uicn.fr](mailto:Anne.caillaud@uicn.fr)



### Hub Officer

Elena Gorchakova

[elena.gorchakova@uicn.fr](mailto:elena.gorchakova@uicn.fr)



## Polar/Subpolar Hub

TAAF

[www.taaf.fr](http://www.taaf.fr)



### Hub Coordinator

Cedric Marteau

[cedric.marteau@taaf.fr](mailto:cedric.marteau@taaf.fr)



### Hub Officer

Claire-Sophie Azam

[claire-sophie.azam@taaf.fr](mailto:claire-sophie.azam@taaf.fr)



## South Atlantic Hub

SAERI

[www.south-atlantic-research.org](http://www.south-atlantic-research.org)



### Hub Coordinator

Paul Brickle

[pbrickle@env.institute.ac.fk](mailto:pbrickle@env.institute.ac.fk)



### Hub Officer

Nathan McNally

[NMcnally@env.institute.ac.fk](mailto:NMcnally@env.institute.ac.fk)



### Hub Expert

Tara Pelembe

[TPelembe@env.institute.ac.fk](mailto:TPelembe@env.institute.ac.fk)